



nLighten edge data center

Munich.

MUC1

Nicknamed Germany's Silicon Valley, Munich is home to a vast range of technology companies as well as automotive, other manufacturing and creative industries. Munich is also one of the most attractive business locations in Germany, not least due to its excellent quality of life. The nLighten data center is proud to support Munich businesses with its multi-megawatt green IT platform.



nLighten München.

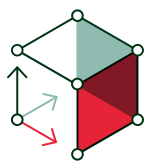
Robert-Bosch-Straße 12
85748 Garching bei München

Location specifics.

The data center is conveniently located just off the A9/A99 ring road, 15 minutes from the main train station, and 20 minutes by car from Munich International Airport. The data center has an area of 2,500 m², 1,800 kW of power, an office area and ample parking space.

Like the other nLighten facilities, the Munich location enables our customers to benefit from a well-connected, high-availability data center and capable of housing high-density cabinets. The data center comes with a wide range of on-site services and a growing ecosystem of partners, all there to optimally support our customers' IT environment.

Highlights.



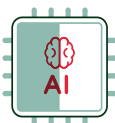
2,500 m²

of edge data center space



1,800 kW

site capacity (end-state)



High Density
(AI ready): 15 kW to
150+ kW



Sustainability:
Commitment to a
net-zero carbon
footprint








Compliance:
[Explore our
certifications](#)



Connectivity:
[Explore nConnect,
our Network Service
Platform](#)

Edge data center Munich Features.

 <p>close • coupled • connected</p> <p>DATA CENTER</p>	<table border="1"> <tbody> <tr> <td>Location</td> <td>Conveniently located for easy access by road and public transport</td> <td>✓</td> </tr> <tr> <td>Design</td> <td>Tier III design target</td> <td>✓</td> </tr> <tr> <td>Connectivity</td> <td>Carrier-neutral data center with diverse fibre entry points and meet-me areas for rapid activation</td> <td>✓</td> </tr> <tr> <td>Cooling</td> <td>Cooling and humidity design complying with ASHRAE A1 allowable category</td> <td>✓</td> </tr> <tr> <td>Compliance</td> <td>We adhere to industry-leading standards, comply with applicable regulations, and continuously enhance our infrastructure and security posture. Explore our certifications</td> <td>✓</td> </tr> </tbody> </table>	Location	Conveniently located for easy access by road and public transport	✓	Design	Tier III design target	✓	Connectivity	Carrier-neutral data center with diverse fibre entry points and meet-me areas for rapid activation	✓	Cooling	Cooling and humidity design complying with ASHRAE A1 allowable category	✓	Compliance	We adhere to industry-leading standards, comply with applicable regulations, and continuously enhance our infrastructure and security posture. Explore our certifications	✓	
Location	Conveniently located for easy access by road and public transport	✓															
Design	Tier III design target	✓															
Connectivity	Carrier-neutral data center with diverse fibre entry points and meet-me areas for rapid activation	✓															
Cooling	Cooling and humidity design complying with ASHRAE A1 allowable category	✓															
Compliance	We adhere to industry-leading standards, comply with applicable regulations, and continuously enhance our infrastructure and security posture. Explore our certifications	✓															
 <p>POWER</p>	<table border="1"> <tbody> <tr> <td>Redundant power with independent A and B feeds to each cabinet</td> <td>✓</td> </tr> <tr> <td>Site capacity (end-state)</td> <td>1,800 kW</td> </tr> <tr> <td>Design Power Usage Effectiveness (PUE)</td> <td>1.29</td> </tr> <tr> <td>Standard Power Density (air cooling): 2-7 kW, up to 15 kW per cabinet</td> <td>Yes</td> </tr> <tr> <td>High-density (AI-ready): 15 kW to 150+ kW</td> <td>On request</td> </tr> </tbody> </table>	Redundant power with independent A and B feeds to each cabinet	✓	Site capacity (end-state)	1,800 kW	Design Power Usage Effectiveness (PUE)	1.29	Standard Power Density (air cooling): 2-7 kW, up to 15 kW per cabinet	Yes	High-density (AI-ready): 15 kW to 150+ kW	On request						
Redundant power with independent A and B feeds to each cabinet	✓																
Site capacity (end-state)	1,800 kW																
Design Power Usage Effectiveness (PUE)	1.29																
Standard Power Density (air cooling): 2-7 kW, up to 15 kW per cabinet	Yes																
High-density (AI-ready): 15 kW to 150+ kW	On request																
 <p>SUSTAINABILITY</p>	<table border="1"> <tbody> <tr> <td>Heat recovery; residual redirected to local heating networks</td> <td>Feasibility study</td> </tr> <tr> <td>100% carbon free energy backed by Guarantees of Origin</td> <td>Yes</td> </tr> <tr> <td>Power Purchase Agreement (PPAs)</td> <td>Yes</td> </tr> <tr> <td>Integrated Carbon-Free Energy (ICFEn) score calculated</td> <td>Yes</td> </tr> </tbody> </table>	Heat recovery; residual redirected to local heating networks	Feasibility study	100% carbon free energy backed by Guarantees of Origin	Yes	Power Purchase Agreement (PPAs)	Yes	Integrated Carbon-Free Energy (ICFEn) score calculated	Yes								
Heat recovery; residual redirected to local heating networks	Feasibility study																
100% carbon free energy backed by Guarantees of Origin	Yes																
Power Purchase Agreement (PPAs)	Yes																
Integrated Carbon-Free Energy (ICFEn) score calculated	Yes																
 <p>SECURITY</p>	<table border="1"> <tbody> <tr> <td>Dual factor access control (pin/biometrics)</td> <td>✓</td> </tr> <tr> <td>CCTV – Full coverage, storage in compliance with local laws</td> <td>✓</td> </tr> <tr> <td>Fire suppression in the data hall</td> <td>✓</td> </tr> </tbody> </table>	Dual factor access control (pin/biometrics)	✓	CCTV – Full coverage, storage in compliance with local laws	✓	Fire suppression in the data hall	✓										
Dual factor access control (pin/biometrics)	✓																
CCTV – Full coverage, storage in compliance with local laws	✓																
Fire suppression in the data hall	✓																
 <p>SUPPORT</p>	<table border="1"> <tbody> <tr> <td>24/7 service desk and 24/7 access to NOC services</td> <td>✓</td> </tr> <tr> <td>On-site services</td> <td>✓</td> </tr> </tbody> </table>	24/7 service desk and 24/7 access to NOC services	✓	On-site services	✓												
24/7 service desk and 24/7 access to NOC services	✓																
On-site services	✓																