



nLighten edge data center

Frankfurt.

FRA1

As well as forming the heart of Germany's financial services industry, Frankfurt is also the country's key data center, IT and telecommunications hub. It offers multiple long-distance international networks as well as excellent access, with a wide range of public transport offerings. For nLighten, all these advantages made it a natural choice in which to establish one of our first German data centers.



nLighten Frankfurt.

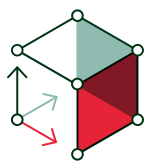
Schwalbacher Straße 60–62
65760 Eschborn

Location specifics.

The data center is conveniently located in Eschborn, on the main road just off the A5 motorway, 350 meters from a train station and just 15 minutes by car from Frankfurt Airport and from Frankfurt's central train station. The data center has an area of almost 2,496 m², 2,400 kW of power, an office area and ample parking space.

Like the other nLighten facilities, the Frankfurt location enables our customers to benefit from a well-connected, high-availability data center and capable of housing high-density cabinets. The data center comes with a wide range of on-site services and a growing ecosystem of partners, all there to optimally support our customers' IT environment.

Highlights.



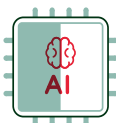
2,496 m²

of edge data center space



2,400 kW

site capacity (end-state)



High Density
(AI ready): 15 kW to
150+ kW



Sustainability:
Commitment to a
net-zero carbon
footprint








Compliance:
[Explore our
certifications](#)



Connectivity:
[Explore nConnect,
our Network Service
Platform](#)

Edge data center Frankfurt Features.

 <p>close • coupled • connected</p> <p>DATA CENTER</p>	<table border="1"> <tbody> <tr> <td>Location</td> <td>Conveniently located for easy access by road and public transport</td> <td>✓</td> </tr> <tr> <td>Design</td> <td>Tier III design target</td> <td>✓</td> </tr> <tr> <td>Connectivity</td> <td>Carrier-neutral data center with diverse fibre entry points and meet-me areas for rapid activation</td> <td>✓</td> </tr> <tr> <td>Cooling</td> <td>Cooling and humidity design complying with ASHRAE A1 allowable category</td> <td>✓</td> </tr> <tr> <td>Compliance</td> <td>We adhere to industry-leading standards, comply with applicable regulations, and continuously enhance our infrastructure and security posture. Explore our certifications</td> <td>✓</td> </tr> </tbody> </table>	Location	Conveniently located for easy access by road and public transport	✓	Design	Tier III design target	✓	Connectivity	Carrier-neutral data center with diverse fibre entry points and meet-me areas for rapid activation	✓	Cooling	Cooling and humidity design complying with ASHRAE A1 allowable category	✓	Compliance	We adhere to industry-leading standards, comply with applicable regulations, and continuously enhance our infrastructure and security posture. Explore our certifications	✓	
Location	Conveniently located for easy access by road and public transport	✓															
Design	Tier III design target	✓															
Connectivity	Carrier-neutral data center with diverse fibre entry points and meet-me areas for rapid activation	✓															
Cooling	Cooling and humidity design complying with ASHRAE A1 allowable category	✓															
Compliance	We adhere to industry-leading standards, comply with applicable regulations, and continuously enhance our infrastructure and security posture. Explore our certifications	✓															
 <p>POWER</p>	<table border="1"> <tbody> <tr> <td>Redundant power with independent A and B feeds to each cabinet</td> <td>✓</td> </tr> <tr> <td>Site capacity (end-state)</td> <td>2,400 kW</td> </tr> <tr> <td>Design Power Usage Effectiveness (PUE)</td> <td>1.29</td> </tr> <tr> <td>Standard Density (air cooling): 2-7 kW, up to 15 kW per cabinet</td> <td>Yes</td> </tr> <tr> <td>High-density (AI-ready): 15 kW to 150+ kW</td> <td>On request</td> </tr> </tbody> </table>	Redundant power with independent A and B feeds to each cabinet	✓	Site capacity (end-state)	2,400 kW	Design Power Usage Effectiveness (PUE)	1.29	Standard Density (air cooling): 2-7 kW, up to 15 kW per cabinet	Yes	High-density (AI-ready): 15 kW to 150+ kW	On request						
Redundant power with independent A and B feeds to each cabinet	✓																
Site capacity (end-state)	2,400 kW																
Design Power Usage Effectiveness (PUE)	1.29																
Standard Density (air cooling): 2-7 kW, up to 15 kW per cabinet	Yes																
High-density (AI-ready): 15 kW to 150+ kW	On request																
 <p>SUSTAINABILITY</p>	<table border="1"> <tbody> <tr> <td>Heat recovery; residual redirected to local heating networks</td> <td>Project agreed</td> </tr> <tr> <td>100% carbon free energy backed by Guarantees of Origin</td> <td>Yes</td> </tr> <tr> <td>Power Purchase Agreement (PPAs)</td> <td>Yes</td> </tr> <tr> <td>Integrated Carbon-Free Energy (ICFEn) score calculated</td> <td>Yes</td> </tr> </tbody> </table>	Heat recovery; residual redirected to local heating networks	Project agreed	100% carbon free energy backed by Guarantees of Origin	Yes	Power Purchase Agreement (PPAs)	Yes	Integrated Carbon-Free Energy (ICFEn) score calculated	Yes								
Heat recovery; residual redirected to local heating networks	Project agreed																
100% carbon free energy backed by Guarantees of Origin	Yes																
Power Purchase Agreement (PPAs)	Yes																
Integrated Carbon-Free Energy (ICFEn) score calculated	Yes																
 <p>SECURITY</p>	<table border="1"> <tbody> <tr> <td>Dual factor access control (pin/biometrics)</td> <td>✓</td> </tr> <tr> <td>CCTV – Full coverage, storage in compliance with local laws</td> <td>✓</td> </tr> <tr> <td>Fire suppression in the data hall</td> <td>✓</td> </tr> </tbody> </table>	Dual factor access control (pin/biometrics)	✓	CCTV – Full coverage, storage in compliance with local laws	✓	Fire suppression in the data hall	✓										
Dual factor access control (pin/biometrics)	✓																
CCTV – Full coverage, storage in compliance with local laws	✓																
Fire suppression in the data hall	✓																
 <p>SUPPORT</p>	<table border="1"> <tbody> <tr> <td>24/7 service desk and 24/7 access to NOC services</td> <td>✓</td> </tr> <tr> <td>On-site services</td> <td>✓</td> </tr> </tbody> </table>	24/7 service desk and 24/7 access to NOC services	✓	On-site services	✓												
24/7 service desk and 24/7 access to NOC services	✓																
On-site services	✓																