



BHX2

Rugby, strategically positioned at the heart of England, is a vibrant town in the county of Warwickshire. It is known for its rich history and bustling town center. Rugby boasts a robust economy anchored in manufacturing and engineering. It plays a central role in the region's economic landscape and serves as a regional telecommunications nexus, driving the exchange of information and fostering technological innovation. At the intersection of technology and progress lies the nLighten data center, designed to provide indispensable data services and advanced connectivity to local industries and enterprises.

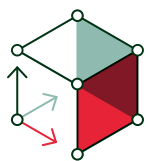
**nLighten Rugby.**

Units 2 & 3, Pelham Rd,
Central Park Dr
CV23 0PB Rugby

Location specifics.

The data center is conveniently located in the north of Rugby, close to the M6 motorway and just 30 minutes by car from Birmingham Airport. The data center has an area of 560 m², 1,200 kW of power, an office area and ample parking space.

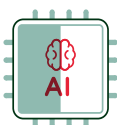
Like the other nLighten facilities, the Rugby location enables our customers to benefit from a well-connected, high-availability data center and capable of housing high-density cabinets. The data center comes with a wide range of on-site services and a growing ecosystem of partners, all there to optimally support our customers' IT environment.

Highlights.

560 m²
of edge data center space



1,200 kW
site capacity (end-state)



High Density
(AI ready): 15 kW to
150+ kW



Sustainability:
Commitment to a
net-zero carbon
footprint



Compliance:
[Explore our
certifications](#)



Connectivity:
[Explore nConnect,
our Network Service
Platform](#)

Edge data center Rugby Features.



 close • coupled • connected

DATA CENTER

Location	Conveniently located for easy access by road and public transport	✓
Design	Tier III design target	✓
Connectivity	Carrier-neutral data center with diverse fibre entry points and meet-me areas for rapid activation	✓
Cooling	Cooling and humidity design complying with ASHRAE A1 allowable category	✓
Compliance	We adhere to industry-leading standards, comply with applicable regulations, and continuously enhance our infrastructure and security posture. Explore our certifications	✓



POWER

Redundant power with independent A and B feeds to each cabinet	✓
Site capacity (end-state)	1,200 kW
Design Power Usage Effectiveness (PUE)	1.29
Standard Power Density (air cooling): 2-7 kW, up to 15 kW per cabinet	Yes
High-density (AI-ready): 15 kW to 150+ kW	On request



SUSTAINABILITY

Heat recovery; residual redirected to local heating networks	Feasibility study
100% carbon free energy backed by Guarantees of Origin	Yes
Power Purchase Agreement (PPA)s	Yes
Integrated Carbon-Free Energy (ICFEn) score calculated	Yes



SECURITY

Dual factor access control (pin/biometrics)	✓
CCTV – Full coverage, storage in compliance with local laws	✓
Fire suppression in the data hall	✓



 24/7

SUPPORT

24/7 service desk and 24/7 access to NOC services	✓
On-site services	✓