



nLighten edge data center

# Milton Keynes.

LTN1

Milton Keynes, in the heart of the UK, is located about halfway between London and Birmingham, and is equidistant from Leicester, Oxford and Cambridge. It boasts a flourishing technology landscape, attracting a wide range of businesses and making it a magnet for innovation. Milton Keynes' strategic location and investment in digital infrastructure have turned it into a key telecommunications center. The nLighten data center in Milton Keynes plays a vital role in supporting the region's businesses and organizations, further solidifying its reputation.

**nLighten Milton Keynes.**

1 Brick Cl

Kiln Farm

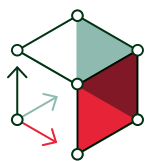
MK11 3JB Milton Keynes

## Location specifics.

**The data center is conveniently located in the west of Milton Keynes,** close to the M1 and A5 and just 1 hour and 20 minutes by car from London Heathrow Airport. The data center has an area of 500 m<sup>2</sup>, 6,000 kW of power, an office area and ample parking space.

Like the other nLighten facilities, the Milton Keynes location enables our customers to benefit from a well-connected, high-availability data center and capable of housing high-density cabinets. The data center comes with a wide range of on-site services and a growing ecosystem of partners, all there to optimally support our customers' IT environment.

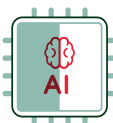
## Highlights.



**500 m<sup>2</sup>**  
of edge data center space



**6,000 kW**  
site capacity (end-state)



High Density  
(AI ready): 15 kW to  
150+ kW



Sustainability:  
Commitment to a  
net-zero carbon  
footprint



Compliance:  
[Explore our  
certifications](#)



Connectivity:  
[Explore nConnect,  
our Network Service  
Platform](#)

## Edge data center Milton Keynes

### Features.


  
 close • coupled • connected
 

#### DATA CENTER

<b>Location</b>	Conveniently located for easy access by road and public transport	✓
<b>Design</b>	Tier III design target	✓
<b>Connectivity</b>	Carrier-neutral data center with diverse fibre entry points and meet-me areas for rapid activation	✓
<b>Cooling</b>	Cooling and humidity design complying with ASHRAE A1 allowable category	✓
<b>Compliance</b>	We adhere to industry-leading standards, comply with applicable regulations, and continuously enhance our infrastructure and security posture. <a href="#">Explore our certifications</a>	✓



#### POWER

Redundant power with independent A and B feeds to each cabinet	✓
Site capacity (end-state)	<b>6,000 kW</b>
Design Power Usage Effectiveness (PUE)	<b>1.29</b>
Standard Power Density (air cooling): 2-7 kW, up to 15 kW per cabinet	<b>Yes</b>
High-density (AI-ready): 15 kW to 150+ kW	<b>Yes</b>



#### SUSTAINABILITY

Heat recovery; residual redirected to local heating networks	<b>Feasibility study</b>
100% carbon free energy backed by Guarantees of Origin	<b>Yes</b>
Power Purchase Agreement (PPA)s	<b>Yes</b>
<a href="#">Integrated Carbon-Free Energy (ICFEn) score calculated</a>	<b>Yes</b>



#### SECURITY

Dual factor access control (pin/biometrics)	✓
CCTV – Full coverage, storage in compliance with local laws	✓
Fire suppression in the data hall	✓


  
 24/7
 

#### SUPPORT

24/7 service desk and 24/7 access to NOC services	✓
<a href="#">On-site services</a>	✓