



nLighten edge data center

Sophia Antipolis II.

NCE2

Located on the French Riviera, Valbonne is home to half of the Sophia-Antipolis technology park. Just next to Antibes, it is an exceptionally well-preserved 2,400-hectare site. Ideally located between the sea and the mountains, it has rapidly established itself as a thriving center for technology and innovation. For almost 50 years, Valbonne Sophia-Antipolis has attracted industrial leaders, engineers and researchers from all over the world. It is a benchmark destination for R&D and technological activities. Related specialities in the fields of health, chemistry, life sciences and the environment rub shoulders here. This hyper-dynamic city is also home to innovative start-ups in artificial intelligence and one of the two nLighten data centers on the Côte d'Azur. Our data centers provide all these companies with world-class connectivity, consolidating the city's position as a leading technology and telecommunications center.



nLighten Sophia Antipolis II.

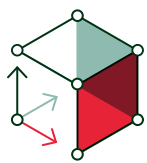
930, route des Dolines
06560 Valbonne Sophia Antipolis

Location specifics.

The data center is conveniently located north-western of Antibes, 14 minutes by bus from Antibes train station and just 15 minutes by car from Nice Airport. The data center has an area of 700 m², 6,000 kW of power, an office area and ample parking space.

Like the other nLighten facilities, the Valbonne location enables our customers to benefit from a well-connected, high-availability data center and capable of housing high-density cabinets. The data center comes with a wide range of on-site services and an established ecosystem of partners, all there to optimally support our customers' IT environment.

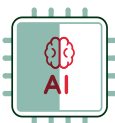
Highlights.



700 m²
of edge data center space



6,000 kW
site capacity (end-state)



High Density
(AI ready): 15 kW to
150+ kW



Sustainability:
Commitment to a
net-zero carbon
footprint








Compliance:
[Explore our
certifications](#)



Connectivity:
[Explore nConnect,
our Network Service
Platform](#)

Edge data center Sophia Antipolis II Features.

 <p>close • coupled • connected</p> <p>DATA CENTER</p>	<table border="1"> <tbody> <tr> <td>Location</td> <td>Conveniently located for easy access by road and public transport</td> <td>✓</td> </tr> <tr> <td>Design</td> <td>Tier III design target</td> <td>✓</td> </tr> <tr> <td>Connectivity</td> <td>Carrier-neutral data center with diverse fibre entry points and meet-me areas for rapid activation</td> <td>✓</td> </tr> <tr> <td>Cooling</td> <td>Cooling and humidity design complying with ASHRAE A1 allowable category</td> <td>✓</td> </tr> <tr> <td>Compliance</td> <td>We adhere to industry-leading standards, comply with applicable regulations, and continuously enhance our infrastructure and security posture. Explore our certifications</td> <td>✓</td> </tr> </tbody> </table>	Location	Conveniently located for easy access by road and public transport	✓	Design	Tier III design target	✓	Connectivity	Carrier-neutral data center with diverse fibre entry points and meet-me areas for rapid activation	✓	Cooling	Cooling and humidity design complying with ASHRAE A1 allowable category	✓	Compliance	We adhere to industry-leading standards, comply with applicable regulations, and continuously enhance our infrastructure and security posture. Explore our certifications	✓	
Location	Conveniently located for easy access by road and public transport	✓															
Design	Tier III design target	✓															
Connectivity	Carrier-neutral data center with diverse fibre entry points and meet-me areas for rapid activation	✓															
Cooling	Cooling and humidity design complying with ASHRAE A1 allowable category	✓															
Compliance	We adhere to industry-leading standards, comply with applicable regulations, and continuously enhance our infrastructure and security posture. Explore our certifications	✓															
 <p>POWER</p>	<table border="1"> <tbody> <tr> <td>Redundant power with independent A and B feeds to each cabinet</td> <td>✓</td> </tr> <tr> <td>Site capacity (end-state)</td> <td>6,000 kW</td> </tr> <tr> <td>Design Power Usage Effectiveness (PUE)</td> <td>1.29</td> </tr> <tr> <td>Standard Power Density (air cooling): 2-7 kW, up to 15 kW per cabinet</td> <td>Yes</td> </tr> <tr> <td>High-density (AI-ready): 15 kW to 150+ kW</td> <td>Yes</td> </tr> </tbody> </table>	Redundant power with independent A and B feeds to each cabinet	✓	Site capacity (end-state)	6,000 kW	Design Power Usage Effectiveness (PUE)	1.29	Standard Power Density (air cooling): 2-7 kW, up to 15 kW per cabinet	Yes	High-density (AI-ready): 15 kW to 150+ kW	Yes						
Redundant power with independent A and B feeds to each cabinet	✓																
Site capacity (end-state)	6,000 kW																
Design Power Usage Effectiveness (PUE)	1.29																
Standard Power Density (air cooling): 2-7 kW, up to 15 kW per cabinet	Yes																
High-density (AI-ready): 15 kW to 150+ kW	Yes																
 <p>SUSTAINABILITY</p>	<table border="1"> <tbody> <tr> <td>Heat recovery; residual redirected to local heating networks</td> <td>Feasibility study</td> </tr> <tr> <td>100% carbon free energy backed by Guarantees of Origin</td> <td>Yes</td> </tr> <tr> <td>Power Purchase Agreement (PPA)s</td> <td>Yes</td> </tr> <tr> <td>Integrated Carbon-Free Energy (ICFEn) score calculated</td> <td>Yes</td> </tr> </tbody> </table>	Heat recovery; residual redirected to local heating networks	Feasibility study	100% carbon free energy backed by Guarantees of Origin	Yes	Power Purchase Agreement (PPA)s	Yes	Integrated Carbon-Free Energy (ICFEn) score calculated	Yes								
Heat recovery; residual redirected to local heating networks	Feasibility study																
100% carbon free energy backed by Guarantees of Origin	Yes																
Power Purchase Agreement (PPA)s	Yes																
Integrated Carbon-Free Energy (ICFEn) score calculated	Yes																
 <p>SECURITY</p>	<table border="1"> <tbody> <tr> <td>Dual factor access control (pin/biometrics)</td> <td>✓</td> </tr> <tr> <td>CCTV – Full coverage, storage in compliance with local laws</td> <td>✓</td> </tr> <tr> <td>Fire suppression in the data hall</td> <td>✓</td> </tr> </tbody> </table>	Dual factor access control (pin/biometrics)	✓	CCTV – Full coverage, storage in compliance with local laws	✓	Fire suppression in the data hall	✓										
Dual factor access control (pin/biometrics)	✓																
CCTV – Full coverage, storage in compliance with local laws	✓																
Fire suppression in the data hall	✓																
 <p>24/7</p> <p>SUPPORT</p>	<table border="1"> <tbody> <tr> <td>24/7 service desk and NOC services, 24/7 access</td> <td>✓</td> </tr> <tr> <td>On-site services</td> <td>✓</td> </tr> </tbody> </table>	24/7 service desk and NOC services, 24/7 access	✓	On-site services	✓												
24/7 service desk and NOC services, 24/7 access	✓																
On-site services	✓																