



BER1

As well as being a lively cultural hub, Berlin is also Germany's most populous city, with 3.7 million inhabitants and is Europe's premier business start-up and scale-up location. Recent surveys have found that Berlin is the most attractive city for would-be entrepreneurs. So it is only logical that nLighten chose to set up a data center there to support the city's start-up scene.

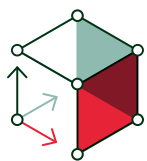
**nLighten Berlin.**

Albert-Einstein-Ring 17  
14532 Kleinmachnow

**Location specifics.****The nLighten edge data center in Berlin**

offers you the ideal location – just off the A115 motorway, 25 minutes from the main train station, and 30 minutes by car from Berlin Brandenburg Airport. The edge data center has more than 3,894 m<sup>2</sup> of space, 1,800 kW of power, an office area and ample parking space.

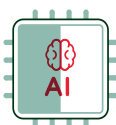
Like the other nLighten facilities, the Berlin location enables our customers to benefit from a well-connected, high-availability data center and capable of housing high-density cabinets. The edge data center comes with a wide range of on-site services and a growing ecosystem of partners, all there to optimally support our customers' IT environment.

**Highlights.****3,894 m<sup>2</sup>**

of edge data center space

**1,800 kW**

site capacity (end-state)



High Density  
(AI ready): 15 kW to  
150+ kW



Sustainability:  
Commitment to a  
net-zero carbon  
footprint



Compliance:  
[Explore our  
certifications](#)



Connectivity:  
[Explore nConnect,  
our Network Service  
Platform](#)

## Edge data center Berlin Features.


  
 close • coupled • connected
 

### DATA CENTER

<b>Location</b>	Conveniently located for easy access by road and public transport	✓
<b>Design</b>	Tier III design target	✓
<b>Connectivity</b>	Carrier-neutral data center with diverse fibre entry points and meet-me areas for rapid activation	✓
<b>Cooling</b>	Cooling and humidity design complying with ASHRAE A1 allowable category	✓
<b>Compliance</b>	We adhere to industry-leading standards, comply with applicable regulations, and continuously enhance our infrastructure and security posture. <a href="#">Explore our certifications</a>	✓



### POWER

Redundant power with independent A and B feeds to each cabinet	✓
Site capacity (end-state)	<b>1,800 kW</b>
Design Power Usage Effectiveness (PUE)	<b>1.29</b>
Standard Density (air cooling): 2-7 kW, up to 15 kW per cabinet	<b>Yes</b>
High-density (AI-ready): 15 kW to 150+ kW	<b>On request</b>



### SUSTAINABILITY

Heat recovery; residual redirected to local heating networks	<b>Feasibility study ongoing</b>
100% carbon free energy backed by Guarantees of Origin	<b>Yes</b>
Power Purchase Agreement (PPA)s	<b>Yes</b>
<a href="#">Integrated Carbon-Free Energy (ICFEn) score calculated</a>	<b>Yes</b>



### SECURITY

Dual factor access control (pin/biometrics)	✓
CCTV – Full coverage, storage in compliance with local laws	✓
Fire suppression in the data hall	✓


  
 24/7
 

### SUPPORT

24/7 service desk and 24/7 access to NOC services	✓
<a href="#">On-site services</a>	✓