



GVA1



As Switzerland's second-largest city and a global leader in diplomacy and banking, Geneva is a beacon of opportunity and innovation. Renowned for its forward-thinking mindset and technological prowess, Geneva stands at the forefront of the digital revolution, driving advancements in telecommunications and research. The city's multifaceted economy, spanning finance, technology, and healthcare, provides a fertile ground for business growth and collaboration. With its strategic location and unwavering commitment to progress, Geneva promises a dynamic and agile business ecosystem where companies can thrive, innovate, and shape the future of commerce on a global scale. Embracing innovation, the nLighten data center anchors Geneva's digital infrastructure, providing cutting-edge services that propel businesses forward into the future.

nLighten Geneva.

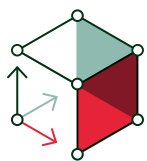
Chemin De L'épingle 2
1217 Meyrin

Location specifics.

The data center is located in the northeast of Geneva, close to the A1 motorway and just 10 minutes by car from Geneva Airport.

Like the other nLighten facilities, the Geneva location enables our customers to benefit from a well-connected, high-availability data center and capable of housing high-density cabinets. The data center comes with a wide range of on-site services and a growing ecosystem of partners, all there to optimally support our customers' IT environment.

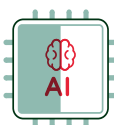
Highlights.


5,595 m²

of edge data center space


9,600 kW

site capacity (end-state)



High Density
(AI ready): 15 kW to
150+ kW



Sustainability:
Commitment to a
net-zero carbon
footprint



Compliance:
[Explore our
certifications](#)



Connectivity:
[Explore nConnect,
our Network Service
Platform](#)

Edge data center Geneva Features.



 close • coupled • connected

DATA CENTER

Location	Conveniently located for easy access by road and public transport	✓
Design	Tier III design target	✓
Connectivity	Carrier-neutral data center with diverse fibre entry points and meet-me areas for rapid activation	✓
Cooling	Cooling and humidity design complying with ASHRAE A1 allowable category	✓
Compliance	We adhere to industry-leading standards, comply with applicable regulations, and continuously enhance our infrastructure and security posture. Explore our certifications	✓



POWER

Redundant power with independent A and B feeds to each cabinet	✓
Site capacity (end-state)	9,600 kW
Design Power Usage Effectiveness (PUE)	1.29
Standard Power Density (air cooling): 2-7 kW, up to 15 kW per cabinet	Yes
High-density (AI-ready): 15 kW to 150+ kW	Yes



SUSTAINABILITY

Heat recovery; residual redirected to local heating networks	Project progressing
100% carbon free energy backed by Guarantees of Origin	Yes
Power Purchase Agreement (PPA)s	No
Integrated Carbon-Free Energy (ICFE) score calculated	Yes



SECURITY

Access control	✓
CCTV – Full coverage, storage in compliance with local laws	✓
Fire suppression in the data hall	✓



 24/7

SUPPORT

24/7 service desk and 24/7 access to NOC services	✓
On-site services	✓