



Multi Touch Table

nLighten multi touch interactive table is a desk type multi touch interactive solution. On the surface of touch table that is similar to tea table and desk, the user can directly operate the computer system through fingers. The multi touch technology can also allow computer identifying and responding to various commands in gestures. The applications of multi touch interactive table are across various industries, such as business, education, entertainment, and so on.

Integrated Desk Design

- The desk design, touch-control, and high-performance computer are integrated together to realize the integration of high-resolution, multi touch and computer.
- Tea Table Type and Desk Type can satisfy different requirements.

Multi touch function

- new generation IR multi touch technology, supporting at least 32 points at the same time
- accurate touch points, sensitive reactions, good anti-interference
- Support direct touch-control with objects like finger, pen, and so on
- No extra driver is required. It can be used upon boot.

High-resolution display

- Adopt latest 0.65" TypeX DMD display chip by TI, U.S.
- Realize true 1080P (1920x1080) high-resolution at 16:9 proportion
- high brightness (900nits), high contrast (1600:1)

High brightness long-life bulb

- Adopt OSRAM high-brightness, long-life 180W new bulb.
- Effective using time can achieve 8000 hours.

Multiple-layer tempered glass screen

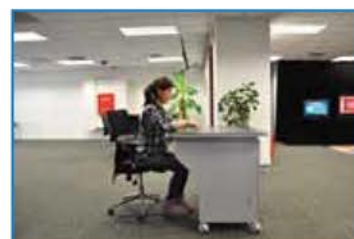
- Tempered glass screen specialized for touch control, water-proof, anti-corrosion, and accidental impacts preventable
- excellent uniformity, with anti-glare and anti-reflection
- it can be rubbed by wet, easy for cleaning and maintenance.

Green and environmental friendly

- low energy consumption, low carbon emission, without harmful materials, such as mercury, sodium, and so on, compliant to international green environmental codes

Abundant customized multi touch software

- Various powerful interactive multi touch software with sophisticate interfaces can be developed in accordance with the requirements of customers.



Desk type design



Different size of table design



抗撞击

Application



Information search



Education, training



Entertainment



Exhibition demo



Business reception

Specification

Display Parameter

Size	32"	42"	50"	32"(Desk type)	42"(Desk type)
Lamp Lifetime	6,000Hrs	6,000Hrs	4,000Hrs	6,000Hrs	6,000Hrs
Dimension(LXHxD/mm)	1100 x 700 x 661	1250x 800 x 785	1370 x 883 x 874	1100x 700 x 800	1370 x 883 x 800
Weight	63Kg	85Kg	93Kg	---	---
Display Color	16.7Million				
Screen Material	Tempered Glass/Anti Glare				
Resolution	Full HD1080P (1920x1080)				

Touch Technology

	Camera-based vision system with LED;
	Infrared direct illumination; Maximum 32 touch points

Computer system(option)

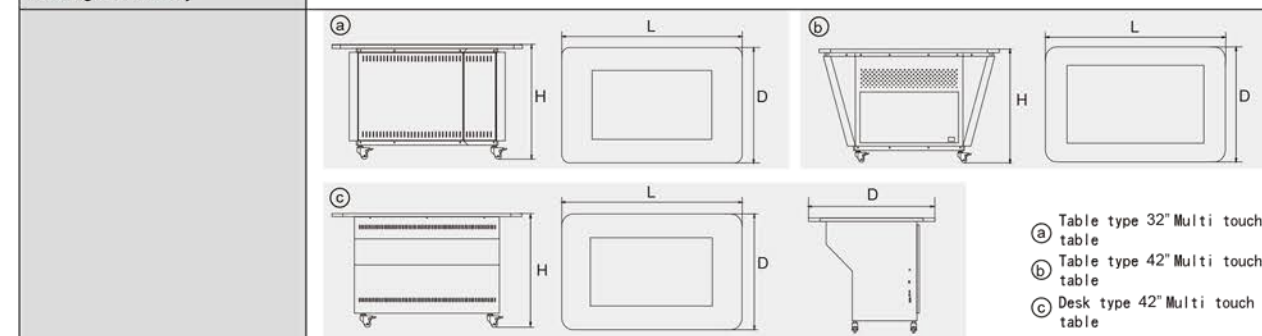
OS	Microsoft Windows 7
CPU	Intel i3 21XX series
Memory	2GB DDR3 1333/1600MHz
HDD	320GB SATA 3.5"HDD
Graphic card	ATI HD 6570 (1GB DDR3 GRAM)
Computer requirement	Can be customised

Other

I/O Connection	1 x mic-in jack / 1 x earphone-in jack / 2 x USB 2.0 ports /	USB2.0 *1, RS485*1
	1 x 11 in 1 card reader / 1 x network interface/ 1 x DVD-RW	VGA*1
Power requirement	AC 100V – 240V / 2.5A, 50/60Hz	

Environment

Operation Temperature	5°C to +35°C
Storage Temperature	-10°C to +50°C
Operation Humidity	20%-80% RH
Storage Humidity	20%-80% RH



* nLighten reserves the right to update above information without prior notice