



Multi Touch Video Wall Module

nLighten multi touch video wall is a large multi touch interactive solution exclusively designed for commercial users. The various demonstration forms can be set as 1x2, 1x3, 1x4 in accordance with the actual situations, mainly used on the advertisements of enterprise images, interactive illustration of commercial data, and so on. This solution can provide the interactive experiences that general large touch-control screen is unable to realize. It supports multiple people operate on different screens at the same time. It is a real interactive solution for multiple people and multiple-point.

Support across screen multi touch

- The world first video wall introduce multi touch technology
- Support at least 10 points touched for control at the same time, really realize multi people operate on different individual screens or on across screen for multi touch.
- The length of video wall can be expanded unlimitedly. Support direct touch with fingers and pen-like objects.
- Accurate touch point, sensitive reaction, good anti-interference
- No extra driver is required. It can be plug and play
- Independent 6-axis positioning technology



Multi touch corsss screen operation

Multi touch software

- Combined with the multi touch software, such as timeline and PaintMT, developed by nLighten to play more powerful functions of system.



Multi people operate on multiple screen

Full HD display

- TI's latest BrilliantColor™ (BrilliantColor™) color management technology and latest 0.65" TypeX DMD display chip.
- True 1080P (1920x1080) high resolution under 16:9 aspect ratio.
- High brightness (900nits) and high contrast (1600:1)

High brightness and long life bulb

- Adopt OSRAM high brightness and long life 180W new type bulb, effective use time up to 6000 hours.

Complex tempered glass

- The screen cover with tempered glass that is exclusively designed for touch, water-proof, anti-corrosion, and accidental impact preventable.
- Provided with anti-glare and anti-reflection feature, excellent uniformity, able to be rubbed with wet cloth, easy for cleaning and maintenance



Anti-corrosion

Green environmental friendly

- Low energy consumption, low carbon emission, free of harmful materials, such as mercury, sodium, and so on, compliant to international green environmental codes.

Application



Human-machine interaction demo



Visualized interactive information display



Interactive digital signage



Company introduction



Commercial display

Specification

Screen specification

Display Size	60"(Thin)	72"(Thin)	60"(Thick)	72"(Thick)
Brightness	700nits	600nits	550nits	350nits
Dimension(L x H x D/mm)	2688 x 918 x 445	1618x 1081x 487	1328x 1147x 760	1600x 1365x 845
Weight	138Kg	97Kg	112Kg	148Kg
Reaction time	16μs			
Contrast	≥1600 : 1			
View angle(Horizontal)	≤ 160°			
View angle(Vertical)	≤ 80°			
Screen material	4mm Tempered glass			
Display technology	0.65"Type X DLP™			
Resolution	Full HD 1080P (1920x1080)			
Touch method	Pen Touch / Finger Touch			

Computer System(Optional)

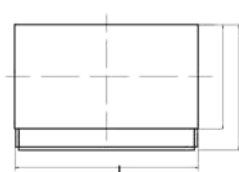
OS	Microsoft Windows 7			
CPU	Intel i5 2500K / Intel i7 2600			
Memory	4GB DDR3 1333/1600MHZ			
HDD	500G HDD or above			
Graphic card	ATI HD67xx/HD68xx/HD69xx series (include DP connection)			

Other

I/O Connection	VGA*1, YPbPr*2, CVBS*2, RS485*1	VGA*1,RGBHV*1,DVI*1,AV*1, RS232*1		
	S-Video*1, Stereo Audio*2, SPDIF Out*1	DVI*1, AV*1, RS232*1		
Power requirement	AC 100 – 240V / 50 – 60Hz			
Power consumption	230W	260W	260W	260W
Standby mode	Less 1W	Less 1W	Less 1W	Less 1W
Light bulb Type	150W	180W	150W	180W
Light bulb lifetime	8000 Hrs	6000 Hrs	8000 Hrs	6000 Hrs

Environment

Operation Temperature	5°C to +35°C
Storage Temperature	-20°C to +70°C
Operation Humidity	20%-80% RH
Storage Humidity	20%-80% RH



* nLighten reserves the right to update above information without prior notice

Phihong Technology Co., Ltd.
nLighten Taiwan
No. 568, Fu Shing 3rd Rd.,
GuiShang, Taoyuan, Taiwan
TEL: +886 3 3277288
FAX: +886 3 3277622